

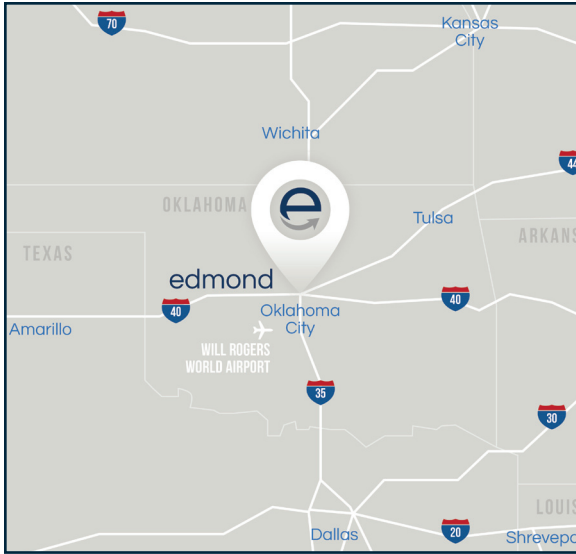
eeda

2017



# Edmond Economic Abstract

# demographics



Edmond, Oklahoma is located 13 miles north of downtown Oklahoma City, in the center of the state.

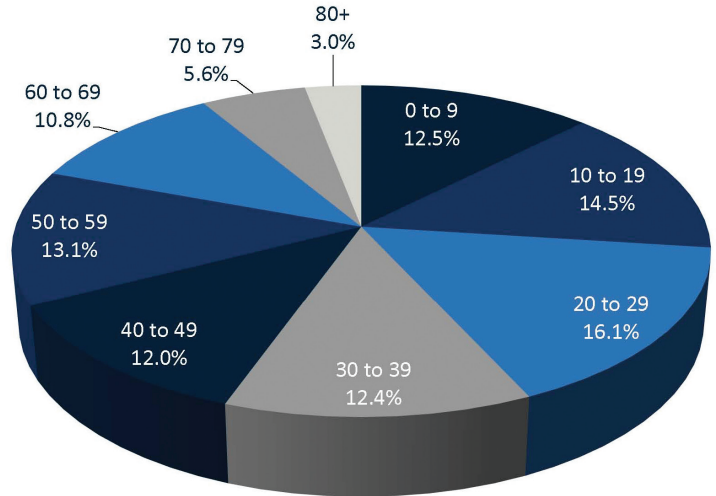
## Traffic Counts Top 10 Intersections

1	33rd and Broadway	65,328
2	15th and Broadway	56,500
3	Broadway and Comfort	48,313
4	15th and Kelly	44,953
5	2nd and Bryant	43,952
6	15th and Bryant	43,850
7	33rd and Boulevard	43,357
8	15th and Santa Fe	42,877
9	Edmond Rd. and Kelly	42,586
10	Broadway and Burton	42,117

## Population

	2016 Estimate	2010 Census
<b>Edmond City Limits</b>	91,743	81,405
<b>Oklahoma City Metro</b>	1,379,525	1,252,987
<b>Oklahoma County</b>	788,980	718,633
<b>Oklahoma</b>	3,990,592	3,751,351
<b>USA</b>	323,580,626	308,745,538

## Population by Age



**Median Age: 35.7**

**Total Households: 35,076**

**Average Household Size: 2.57**

*On the cover: Campbell Corner*

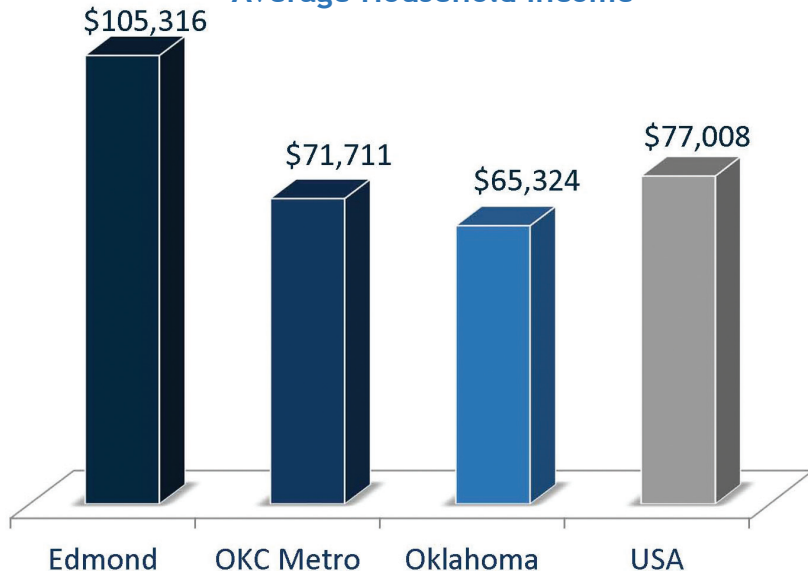
*Sources: City of Edmond; ESRI; U.S. Census*

# quality of life

The Edmond Fire Department has a fire protection rating of Class 2/4. The Insurance Services Office (ISO) reviews fire prevention and fire suppression capabilities of local fire departments on a scale of one to ten.

**The total annual income for Edmond's city limits is estimated to be more than \$3.7 billion.**

**Average Household Income**



**City Limits: 90 square miles**

**190 pieces of public art**

**More than 30 parks and outdoor venues**

## **Edmond has the lowest crimes per thousand rate in the OKC Metro:**

Edmond	17.21
Yukon	22.14
Moore	25.44
The Village	27.28
Bethany	31.31
Warr Acres	38.49
Midwest City	44.18
Del City	47.19
Oklahoma City	47.22

Part 1 Crimes: Murder, Forcible Rape, Robbery, Aggravated Assault, Burglary, Larceny Theft and Arson. These figures are per 1,000 population and are based on statistics reported by the FBI.

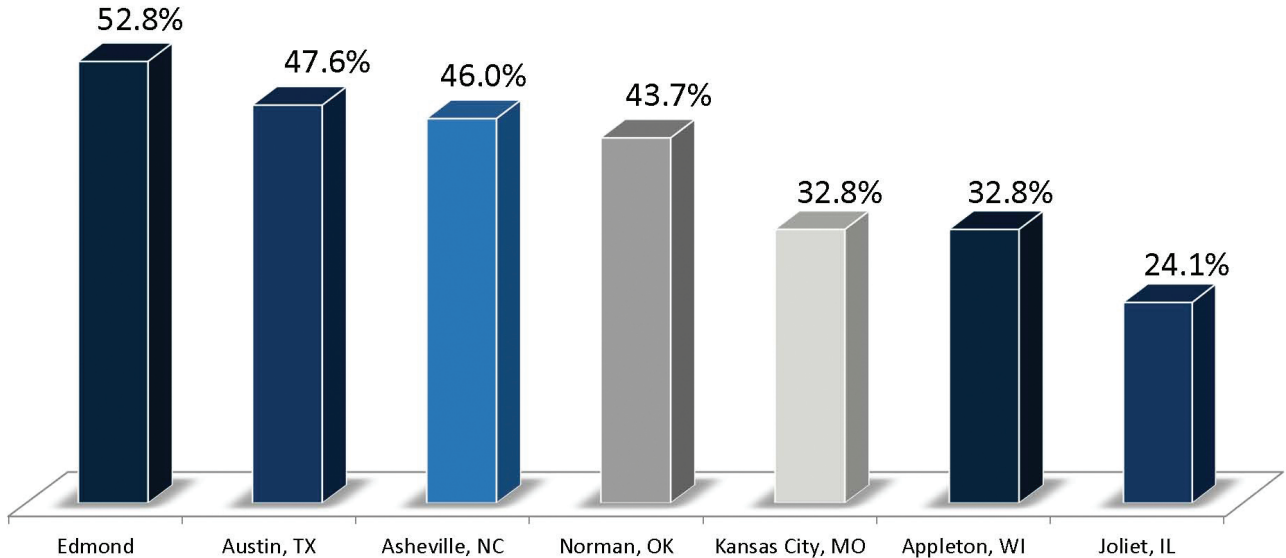
## **2016 Annual Average Cost of Living Comparison**

Edmond, OK	94.1
Wilmington, NC	95.3
Odessa, TX	95.7
Joliet, IL	99.0
Sarasota, FL	104.3
Albany, NY	110.4
Modesto, CA	112.2

The C2ER Cost of Living Index measures the differences between areas in the cost of more than 60 consumer goods and services, excluding taxes and nonconsumer expenditures, for professional and managerial households in the top income quintile.

# workforce

## Percent of Population Age 25 and Older with Bachelor's Degrees



**More than 100,000  
college students are  
within a 45 minute  
drive of Edmond.**

Daytime Population	36,556
In Labor Force	46,901
Unemployment Rate	3.2%
Average Travel Time to Work	20 minutes
Workforce within 30 miles of Edmond	670,486

### Francis Tuttle Technology Center

Francis Tuttle Technology Center partners with the Edmond Public School District and area businesses to serve the community with highly-skilled training. High school students, working adults, and businesses accounted for more than 36,000 enrollments in Fiscal Year 2016. Business and Industry Services at Francis Tuttle is a comprehensive business consulting and training resource group comprised of specialists experienced in a variety of industries. In 2015-2016, the team assisted 449 companies with training for new technologies, strategic planning, specialized safety training, and many other training initiatives. Included at Francis Tuttle's Edmond location, the Business Innovation Center, is Launch Pad FT, a business incubator. This initiative assists start-up companies and entrepreneurs in building successful businesses. In 2016, the 16 companies in Launch Pad FT contributed \$3.5 million to the Edmond economy through salaries and wages, and generated more than \$9.5 million of revenue. The Business Innovation Center also houses the Center for Municipal Excellence, a joint venture with



**FRANCISTUTTLE**  
TECHNOLOGY CENTER

the City of Edmond. For more information, visit [francistuttle.edu](http://francistuttle.edu).



# education

## Edmond Public Schools



Centennial Elementary School opened in 2007. The school is one of seven Great Expectations Model Schools in the district.

### Enrollment

17 Elementary Schools (Pre K-5)	12,029
6 Middle Schools (6-8)	5,273
3 High Schools (9-12)	7,101
<b>2016 Total</b>	<b>24,403</b>

**School District Limits:**  
**133 square miles**

**2010 Census**  
**District Population:**  
**132,523**

## University of Central Oklahoma



As Oklahoma's metropolitan university, Central connects students to an educational experience that develops the skills needed to be confident and ready for the job market of today and tomorrow. With 117 undergraduate majors and 70 graduate majors, Central is the state's top ranked public regional university by *U.S. News and World Report*. The university was the nation's first university to be designated a U.S. Olympic and Paralympic Training Site and is a recognized leader nationally for its sustainable practices, like its use of 100 percent wind energy and alternative transportation programs. Founded in 1890, Central is proud of its tradition of learning, leading and serving the community.

**2016 Fall Enrollment** 16,428  
**Employees** 1,427

## Oklahoma Christian University

Oklahoma Christian University is a private, four-year comprehensive university that offers undergraduate programs in more than 80 fields of study, an undergraduate Honors Program, and graduate programs in accountancy, business administration, computer science, engineering, Christian ministry, divinity and theological studies. OC is recognized as one of the best universities in the western United States by *U.S. News and World Report* and *The Princeton Review*.

**2016 Fall Enrollment** 2,600  
**Employees** 386



**OKLAHOMA CHRISTIAN UNIVERSITY**  
— Since 1950 —

# business climate

Some of Edmond's targeted industries include Wholesale Trade; Light Manufacturing; Information; and Professional, Scientific and Technical Services. Edmond is also home to a thriving health care industry that has created an economic impact of more than \$225 million since 2010. Major health care providers in the area include INTEGRIS Health Edmond, Mercy Edmond I-35, OU Medical Center *Edmond*, and Summit Medical Center.

## Edmond Major Employers

Company	Product/Service	Employment
Edmond Public Schools	Public Education	2,807
University of Central Oklahoma	Higher Education (public)	1,427
City of Edmond	Local Municipality	726
OU Medical Center <i>Edmond</i>	Hospital	400
Adfitech	Quality Control for the Mortgage Industry	384
INTEGRIS Health Edmond	Hospital	333
Petra Industries, Inc.	Electronics Distribution	325
Mercy Edmond	Clinics and Wellness Center	316
Summit Medical Center	Hospital	191
Pelco Products, Inc.	Traffic and Utility Hardware Manufacturing	170

### Sales Tax Rates

Edmond: 3.75%

Oklahoma: 4.5%

### Income Tax Rates

State Corporate: 6%

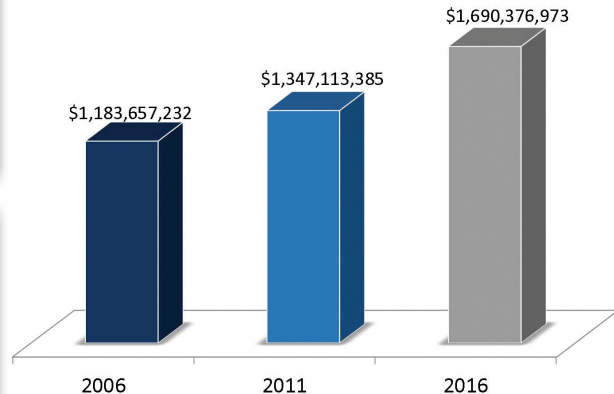
State Personal: 5%

### Ad Valorem (Property Tax Rate)

105.84 mills per \$1,000 of assessed value

	2016	2015	2014
<b>Total Sales Tax Collections</b>	\$63,389,136	\$64,177,164	\$62,562,107
<b>Retail Sales Tax Collections</b>	\$47,745,971	\$47,969,179	\$46,439,440

## Total Taxable Sales for Edmond



Source: Oklahoma Tax Commission

# commercial market

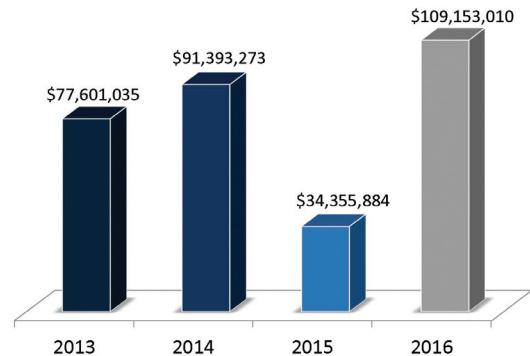


In 2016, more than \$7.5 million was invested into the Bryant Square Shopping Center, located on the southeast corner of E. 2nd St. and S. Bryant Ave. Renovations included façade updates as well as alterations to existing interiors to allow for multiple new tenants. Future plans include the construction of new outparcel buildings as well as parking lot and landscaping upgrades.

## New Commercial Permits by Type

Type	Square Feet	Total Value
Hotel	175,023	\$34,200,000
Commercial Misc.	33,080	\$26,735,973
Retail	105,782	\$20,125,900
Office	83,326	\$11,944,000
Multi-Family	96,290	\$9,967,137
Industrial	108,208	\$4,110,000
Medical	17,740	\$2,070,000

## \$ Value of New Commercial Permits



**New Commercial  
Building Permits:  
66**

**Average Value of  
New Commercial  
Permits:  
\$1,653,833**

## Multi-Family Occupancy Rate: 93%

Apartment Type	Average Rent	Average Sq. Ft.	Average Rent Per Sq. Ft.	Rent Range
1 BR/1 BA	\$632	655	\$0.96	\$520-\$795
2 BR/1 BA	\$706	848	\$0.83	\$665-\$795
2 BR/2 BA	\$740	923	\$0.80	\$650-\$916
3 BR/2 BA	\$965	1,217	\$0.79	\$765-\$1,116

Source: CBRE|Oklahoma

# hotel market



The City of Edmond is partnering with a private developer for the construction of a six story, 158-room Hilton Garden Inn hotel and 20,000-square-foot conference center on the northwest corner of Interstate 35 and Covell. Construction began in May 2016 and is expected to be completed by December 2017. The City of Edmond is investing in land, construction of the conference center, water, sewer, electric and road improvements. This will enable several hundred acres of commercial development to take place around this project as well as on the southwest and northeast corners of this intersection.

**Total Available Rooms**

829

**Average Occupancy**

55.39%

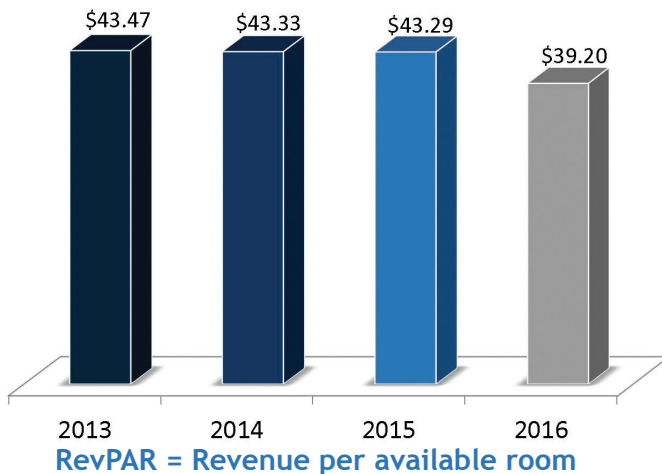
**Average Daily Rate**

\$70.76

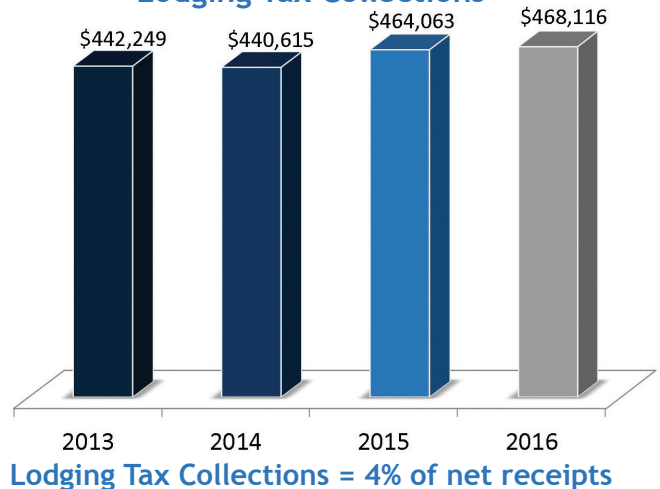
**2016 Gross Receipts**

\$13 million

**Average RevPAR**



**Lodging Tax Collections**



Source: Edmond Convention & Visitors Bureau; EEDA

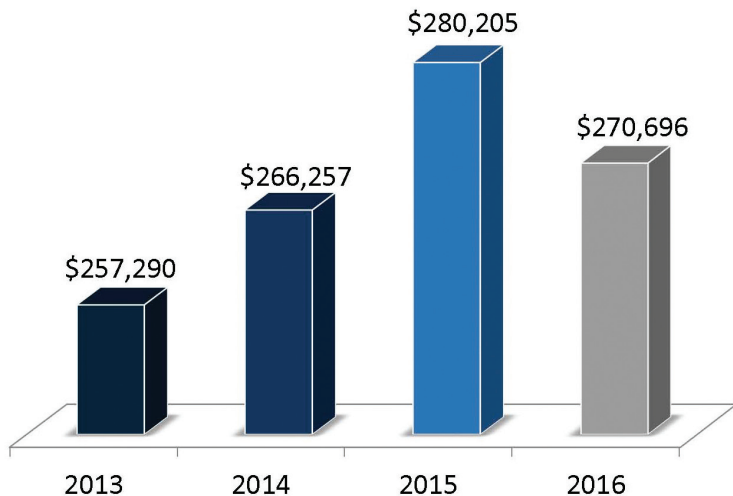


# residential market



This 2,571-square-foot home in Edmond's Town Square neighborhood recently sold for \$420,000.

## Average Sales Price of Existing Single Family Home



## 2016 Existing Single Family Homes

Total Number Sold	3,706
Total Volume Sold	\$1,003,198,961
Median Days on Market to Sale	29

## 2016 New Single Family Home Construction

Average Price (Not Including Lot Costs)	\$342,700
Permits Issued in 2016	415
Total Volume	\$142,220,635

Source: Oklahoma City Metropolitan Association of Realtors; Oklahoma County



# resources

## Edmond Economic Development Authority



Stay in touch with the EEDA:

 @EdmondEconomic

 @EdmondEconomic

[www.eeda.com](http://www.eeda.com)

(405) 340-0116

The Edmond Economic Development Authority (EEDA) exists to offer resources that stimulate the growth of Edmond's economy by creating and maintaining an optimum environment for both new and existing businesses, offering services that facilitate growth and expansion of those businesses and generating opportunities to increase the sales tax base of the city of Edmond. Some of EEDA's services include marketing services, commercial real estate services, knowledge-based business services, demographics and events. The City of Edmond and the EEDA also offer an Edmond Economic Incentive Policy, that on a case-by-case basis will give consideration to economic development incentives as stimulation for growth in Edmond. Economic assistance may be, but not limited to, reimbursement of infrastructure costs; façade improvement; or waiving certain building permit, inspection and connection fees. Contact the EEDA for more information.

## Edmond Electric

Edmond Electric is Oklahoma's largest community-owned electric utility. Edmond Electric has served the Edmond community since 1908. As a publicly owned power company and a City department, Edmond Electric returns profits to the community annually. Their profits support vital city services such as police, fire, streets, and parks. Additionally, Edmond Electric provides a 99.9% reliability rating!



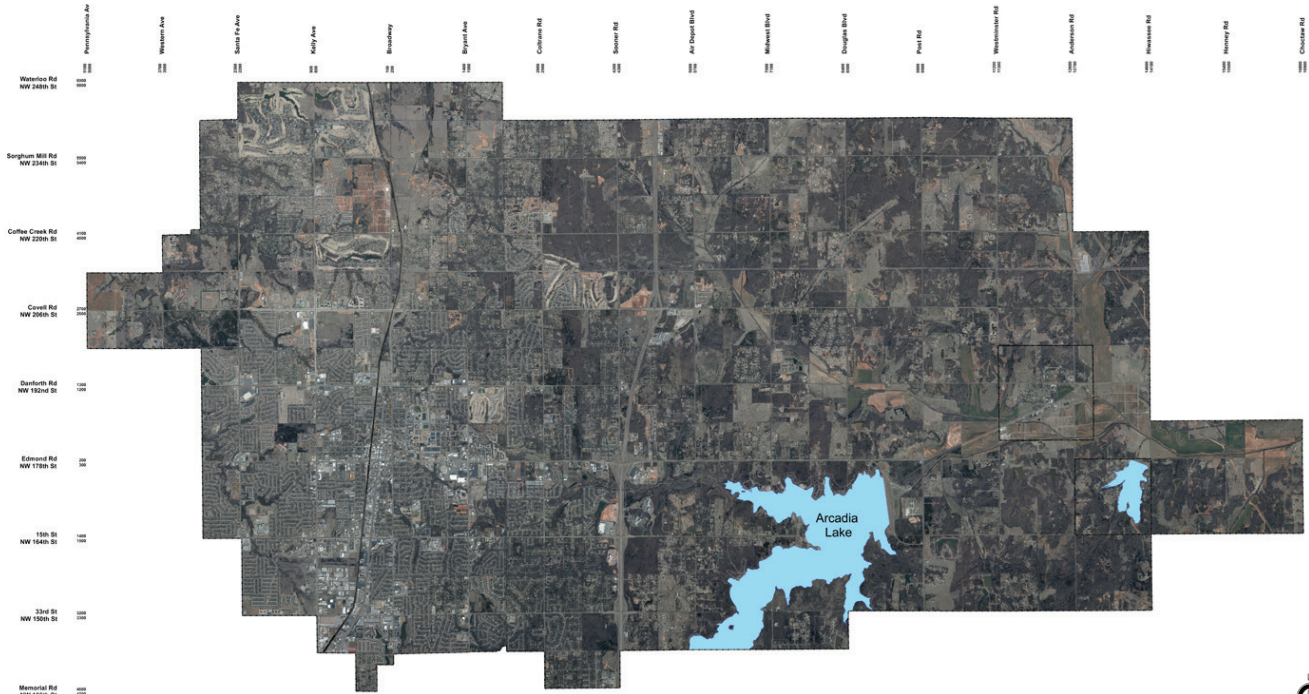
**edmondelectric**  
The POWER of Edmond

Edmond Electric's Demand and Energy Efficiency Program (DEEP) was established to assist qualified commercial customers in Edmond to reduce their electric service energy demands and costs. DEEP provides funds to commercial customers who implement energy-saving measures that will reduce their summer peak electric demands. Opportunities for DEEP projects may exist in the areas of lighting, HVAC, refrigeration, commercial food service equipment, pumps and motors. Projects are evaluated by Edmond Electric and Oklahoma Municipal Power Authority (OMPA) staff, on a case-by-case basis. For more information, visit [edmondelectric.com/deep](http://edmondelectric.com/deep).

## Guthrie-Edmond Regional Airport

The Guthrie-Edmond Regional Airport, located seven miles north of Edmond, is operated through an intergovernmental agreement between the City of Edmond and the City of Guthrie. Investment since the agreement began in 2002 totals approximately \$15 million. Sites for corporate jet hangars are available. Call (405) 282-2312 or visit [guthrieedmondregionalairport.com](http://guthrieedmondregionalairport.com).

# edmond city limits



*The City of Edmond disclaims any warranty or merchantability or warranty for fitness of use for a particular purpose, expressed or implied, with respect to this data. Furthermore, the City of Edmond disclaims any responsibility for the accuracy or completeness of this data.*

Additional maps are available at [www.eeda.com/map-room](http://www.eeda.com/map-room).  
Demographic profiles are available for any location in the city of Edmond.  
Please call the EEDA at (405) 340-0116 or email [info@eeda.com](mailto:info@eeda.com) with your request.

# IS YOUR BUSINESS READY FOR...

INCREASED PRODUCTIVITY? • HIGHER PROFITS? • AN IMPROVED BOTTOM LINE?

## BUSINESS AND INDUSTRY SERVICES

- Safety Training  
(Some topics available in Spanish)
- Technical Skills Training
- Workforce Training
- Computer Training
- Manufacturing Training
- Industrial Maintenance Training
- Quality Systems and Tools
- Lean and Six Sigma
- Management Development and Leadership Training
- Small Business and Entrepreneurial Consulting
- Government Contracting Assistance
- Public Works Training
- CE for Real Estate, Insurance, and Home Inspection

**Flexible**  
**Affordable**  
**Focused**

**Tailored**  
**Responsive**  
**Convenient**



*Francis Tuttle... your trusted source  
for personalized business training.*



**FRANCISTUTTLE**  
BUSINESS & INDUSTRY SERVICES

[francistuttle.edu/bis](http://francistuttle.edu/bis)  
405.717.4740